



**The McDonald Theatre**

1010 Willamette Street  
Eugene Oregon 97401

**MANAGEMENT CONTACT INFORMATION:**

Production Manager	Chelsea Joyce	- Chelsea@Kesey.com
Box Office Manager	Cami White	- Cami@Kesey.com
Promoter Representative	Calyn Kelly	- Calyn@Kesey.com
Security Manager	Nick Rossoff	- NRossoff@Kesey.com

**VENUE INFORMATION:**

Managed by Kesey Enterprises Inc.  
 National Registered Historic Theatre  
 Opened May 7, 1925  
 Capacity: 1,300 Standing, 759 seated  
 Floor seats are removed depending on event  
 The McDonald Theatre is a non-union labor venue  
 Curfew: 12:00 AM  
 dB Limit: 105dB A weighted, 115dB C weighted at FOH; 16 subwoofers maximum

**STAGE INFORMATION:**

The stage is 4' from the ground; 28' wide by 24' deep  
 Sound wings are 17' wide by 13' deep stage right, and 17' wide by 13' deep stage left.  
 Stage barricade is Mojo style, blow through, running the entire width of the stage.  
 Back stage doors open directly to back stage alley. 10' flat push from truck ramp to stage.

**POWER INFORMATION:**

**Audio:** 1x Applied Electronics power distro with 3-phase cam lock pass thru  
 1x 100 Amp 3-phase, 5-wire Cam-lock, upstage right  
 1x 100 Amp single phase, 4-wire Cam-lock, downstage left

**Lighting / Video:** 1x 200 Amp 3-phase, 5-wire Cam-lock, upstage right, pass thru house distro  
 1x 200 Amp single phase, 5-wire Cam-lock, upstage right

**Shore / Bus:** 1x 60 Amp shore power service is available for the back stage alley.

**RIGGING:**

**Audio Points:** House Left 28' from floor – Maximum weight 2,500 lbs  
 House Right 28' from floor – Maximum weight 2,500 lbs

**Lighting Points:** The McDonald Theatre has limited rigging points available for lighting.

## **LIGHTING INFORMATION:**

### **Lighting Console:**

Avolites Pearl Expert – with Titan software

3x SPARE DMX 5-pin cables, FOH to stage right available for guest consoles

### **House Lights:**

House lights controlled by wall mounted touch panel at Front of House

### **Conventional Lighting:**

12x PAR 64 cans, pre-loaded with 1000W bulbs, various spot, med, wide – individually patched downstage. Assorted gels, please advance colors.

1x Altman Leko 750w Spot light house left at box boom location

1x Altman Lekos 750w Spot light house right at box boom location

2x Follow Spots, balcony left and right – please advance

ClearCom headsets available from FOH to each follow spot location

### **Intelligent / LED Lighting:**

#### **In use:**

14x Elation Fuze Wash Z350 – 8 on upstage truss, 4 on downstage truss, 1x at each house left and right box boom location.

4x Elation Satura Spots – on upstage truss.

2x Antari Fazer Z350 – hazer and fan

**Upon request:** Fixtures below available as floor package—please advance.

9x Elation Fuze Wash Z350

2x Elation Satura Spots

12x Elation Opti RGB – LED PARs

6x Elation Power Spot 575

8x Elation Design Spot 250

US



Satura Spot



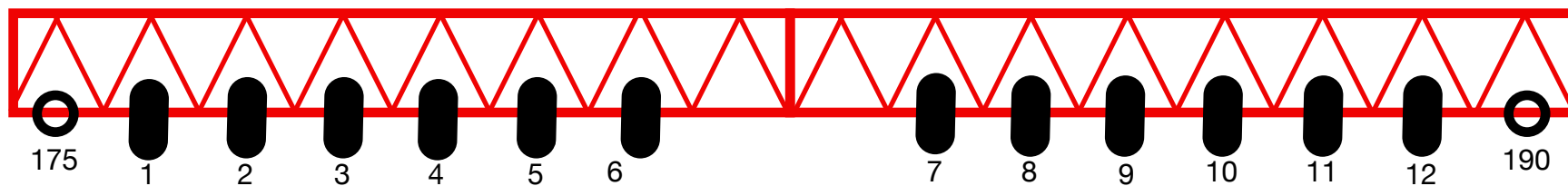
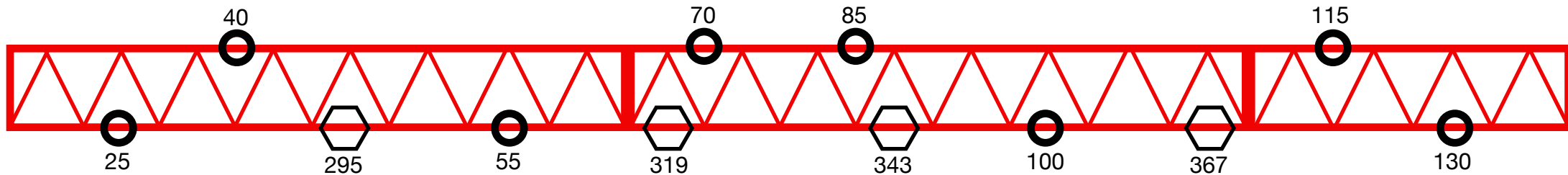
Fuze Wash  
Z350



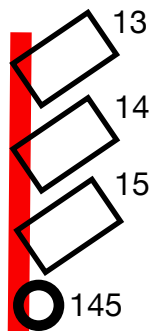
575W ETC S4 Leko



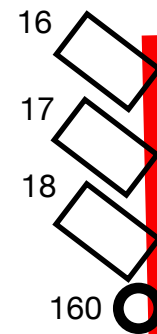
Par 64



DS

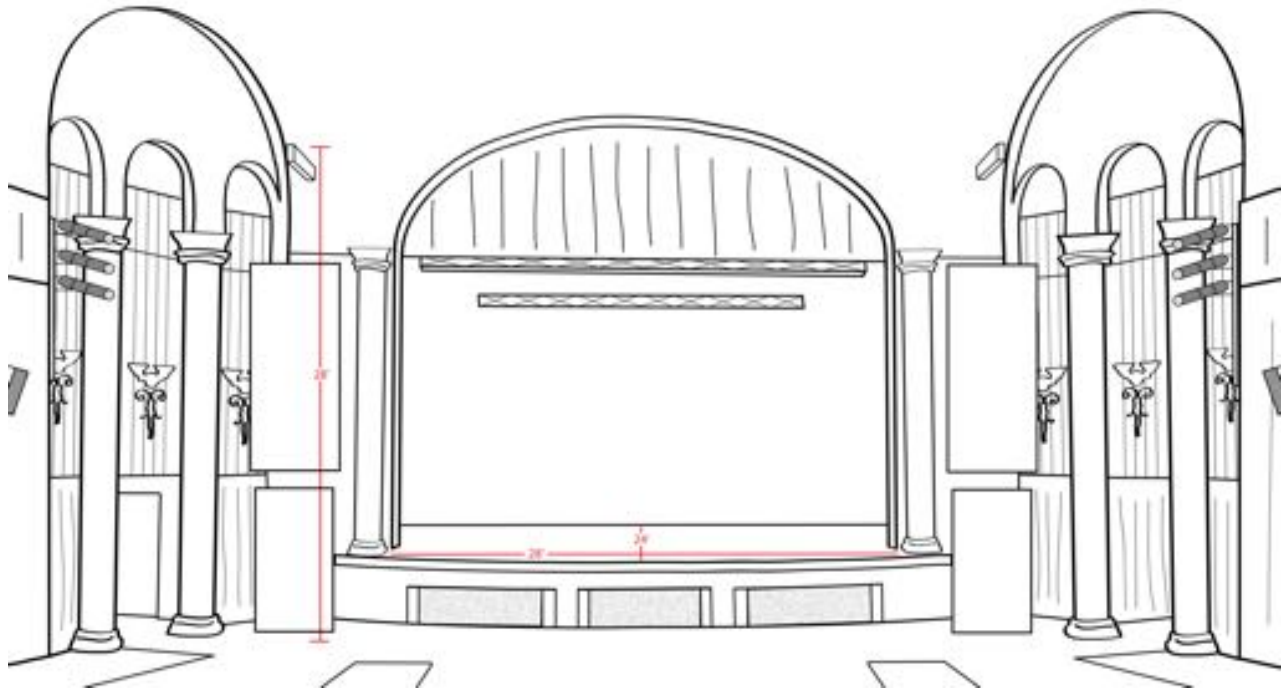


HL



HR

Fixture	Fixture #	Add.	Location	Universe	Circuit
1000 W par 64	1	1	DS Truss	1	
1000 W par 64	2	2	DS Truss	1	
1000 W par 64	3	3	DS Truss	1	
1000 W par 64	4	4	DS Truss	1	
1000 W par 64	5	5	DS Truss	1	
1000 W par 64	6	6	DS Truss	1	
1000 W par 64	7	7	DS Truss	1	
1000 W par 64	8	8	DS Truss	1	
1000 W par 64	9	9	DS Truss	1	
1000 W par 64	10	10	DS Truss	1	
1000 W par 64	11	11	DS Truss	1	
1000 W par 64	12	12	DS Truss	1	
575w ETC Source 4 Leko	1	13	House Left	1	
575w ETC Source 4 Leko	2	14	House Left	1	
575w ETC Source 4 Leko	3	15	House Left	1	
575w ETC Source 4 Leko	4	16	House Right	1	
575w ETC Source 4 Leko	5	17	House Right	1	
575w ETC Source 4 Leko	6	18	House Right	1	
Elation FUZE WASH Z350 (15 ch)	1	25	US Truss	1	3
Elation FUZE WASH Z350 (15 ch)	2	40	US Truss	1	3
Elation FUZE WASH Z350 (15 ch)	3	55	US Truss	1	3
Elation FUZE WASH Z350 (15 ch)	4	70	US Truss	1	4
Elation FUZE WASH Z350 (15 ch)	5	85	US Truss	1	4
Elation FUZE WASH Z350 (15 ch)	6	100	US Truss	1	4
Elation FUZE WASH Z350 (15 ch)	7	115	US Truss	1	5
Elation FUZE WASH Z350 (15 ch)	8	130	US Truss	1	5
Elation FUZE WASH Z350 (15 ch)	9	145	House Left	1	7
Elation FUZE WASH Z350 (15 ch)	10	160	House Right	1	7
Elation FUZE WASH Z350 (15 ch)	11	175	DS Truss	1	6
Elation FUZE WASH Z350 (15 ch)	12	190	DS Truss	1	6
Elation Satura Spot CMY Pro (24 ch)	1	295	US Truss	1	1
Elation Satura Spot CMY Pro (24 ch)	2	319	US Truss	1	1
Elation Satura Spot CMY Pro (24 ch)	3	343	US Truss	1	2
Elation Satura Spot CMY Pro (24 ch)	4	367	US Truss	1	2



### **AUDIO INFORMATION:**

#### **House PA:**

Meyer Milo array with Galileo Meyer System Controller

16x Meyer Milo line array, powered (8x per side flown as an array: 7x 90°, 1x 120°)

8x Meyer 700-HP powered subs (4x per side)

4x Radian 12x2 coaxial near fill speakers (with ABI. amp rack)

#### **Front of House:**

1x Avid Venue SC-48, 48 Channel digital mixing console

1x Avid Venue Pro-Pack Live plug in suite

1x Galileo Drive Rack

12x Channel balanced XLR drive snake

1x Dual circuit 20 amp Edison, quad box

#### **Monitor Console:**

1x Yamaha M7CL-48, 48 channel digital mixing console

#### **Monitors:**

12x EAW SM12 monitor wedges

12x VTS 12x2 coaxial floor monitors

2x VTS Vector 15x2 coaxial side fill tops

2x VTS 2x18 side fill subs

1x VTS Vector 15x2 coaxial drum monitor

2x VTS 1x18 drum subs

#### **Monitor Amps:**

8x AB International 8120B power amplifiers

1x AB International SUB-3600 drum fill amp

2x AB International 3600 side fill amps

1x BSS Minidrive

2x Ashly 4.8 SP speaker processors

## **AUDIO INFORMATION CONTINUED:**

### **Snake / Stage Boxes:**

1x 54 Channel Ramlatch stage box  
1x 250' Ramlatch house snake  
1x 54 Channel FOH console fan-out  
1x 25' Ramlatch monitor console tail  
1x 25' Ramlatch Guest Monitor console tail  
1x Whirlwind patchmaster  
4x 12 Channel, 50', sub-snake stage boxes  
60x 25' microphone cable

### **Microphones/DI's:**

8x Shure Sm-58  
6x Shure SM-57  
4x Audix ADX-91  
2x Audix D-1  
2x Audix D-2  
2x Audix D-4  
2x Audix D-6  
1x Audio Technica 4033  
8x Audix I-5  
1x Shure Beta 52  
1x Shure Beta 91  
1x Audix CX-211

#### *DIs:*

4x BSS Active  
4x Radial JDI Active  
4x Radial Stereo Passive  
4x Radial Mono Passive

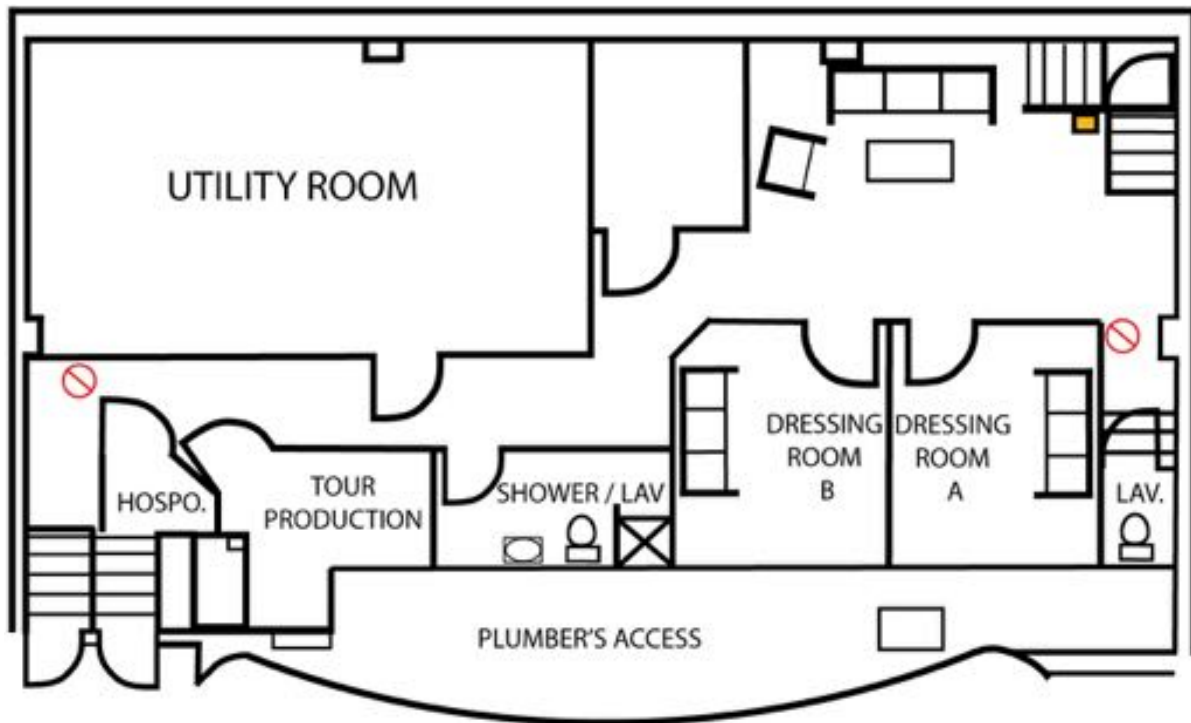
### **Microphone Stands:**

12x Standard tri-pod boom stands  
12x Short tri-pod boom stands  
1x Super short tri-pod kick stand  
2x Round Base, 10lb straight stands  
6x Drum claws, MIC-EZE and L.P.

### **Production Intercom:**

2x Production Intercom belt packs  
2x Production Intercom headsets  
2x Production Intercom blazons  
1x Production Intercom power supply

## BACKSTAGE LAYOUT:



### BACKSTAGE INFORMATION:

- Located under the stage
- 2x private artist dressing rooms
- 1x artist lounge areas
- 1x tour production office
- 1x onsite shower
- 2x restrooms
- No onsite laundry

Wireless high speed Internet access is provided, passwords will be provided day of show

### MERCHANDISE:

- Located in the main lobby of the theatre
- 6x 6' tables with tablecloths and chairs are provided.
- 2x display racks available for merchandise display

### SHIPPING / DELIVERIES:

- Please reference your name or show on the shipping label.
- Please alert us if you are shipping any packages to the venue.

Kesey Enterprises Inc.  
Attn: Cami White / *show name here*  
1016 Willamette St.  
Eugene OR 97401

## PARKING / DRIVING DIRECTIONS:

**Please advance all touring vehicles for street parking permits.**

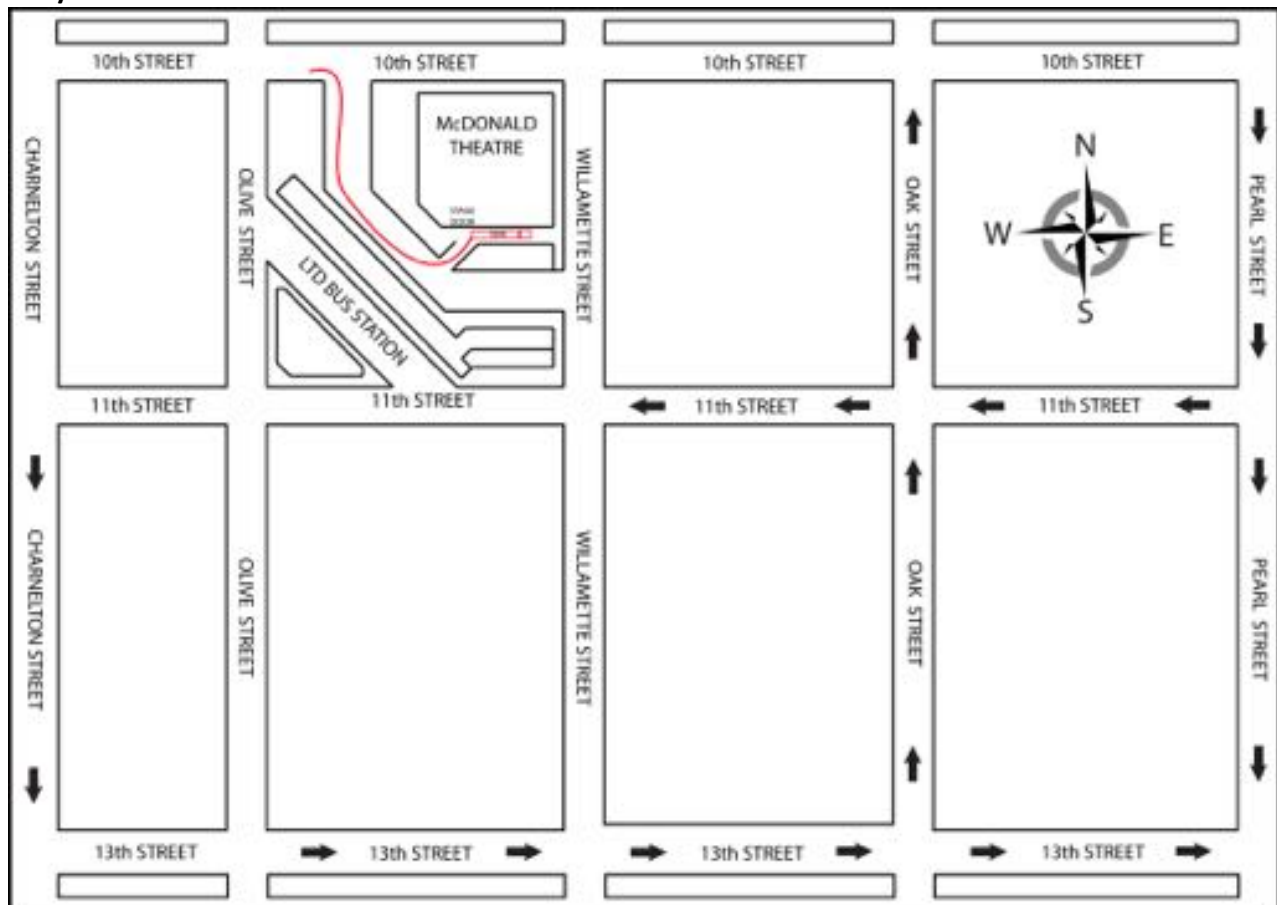
-The Driver of the bus or semi parking in the back alley of the theatre MUST CALL CHELSEA JOYCE before arrival, to coordinate pulling through the adjacent bus station. (Chelsea Joyce – Production Manager – 541-206-9995)

- Drivers must pull through station via the 10<sup>th</sup> street entrance when the city buses are not present. City buses depart on the top and half of the hour (example 1:00pm or 1:30pm).

-We work with the station officers to make this as smooth as possible. Thank you for your cooperation.

-All reserved spots on the streets will be coned off the night before your show. Please only park in designated spots, all other non-reserved spots are subject to ticketing. Vehicles may stay in spots on the street until 7:00am the following day, when normal parking rules resume. Thank you.

**Bus / Semi must enter Bus Station via the 10<sup>th</sup> St. Entrance.**



**1x 60 Amp shore power service is available for bus or semi in back alley.**

## Parking questions and directions:

Chelsea Joyce – Production Manager 541-206-9995

[Chelsea@Kesey.com](mailto:Chelsea@Kesey.com)



## RIGGING INFORMATION

### ALL RIGGING NEEDS MUST BE ADVANCED!

The McDonald Theatre has very limited rigging points available.

The stage has 2x beams running upstage to downstage, 18' from center.

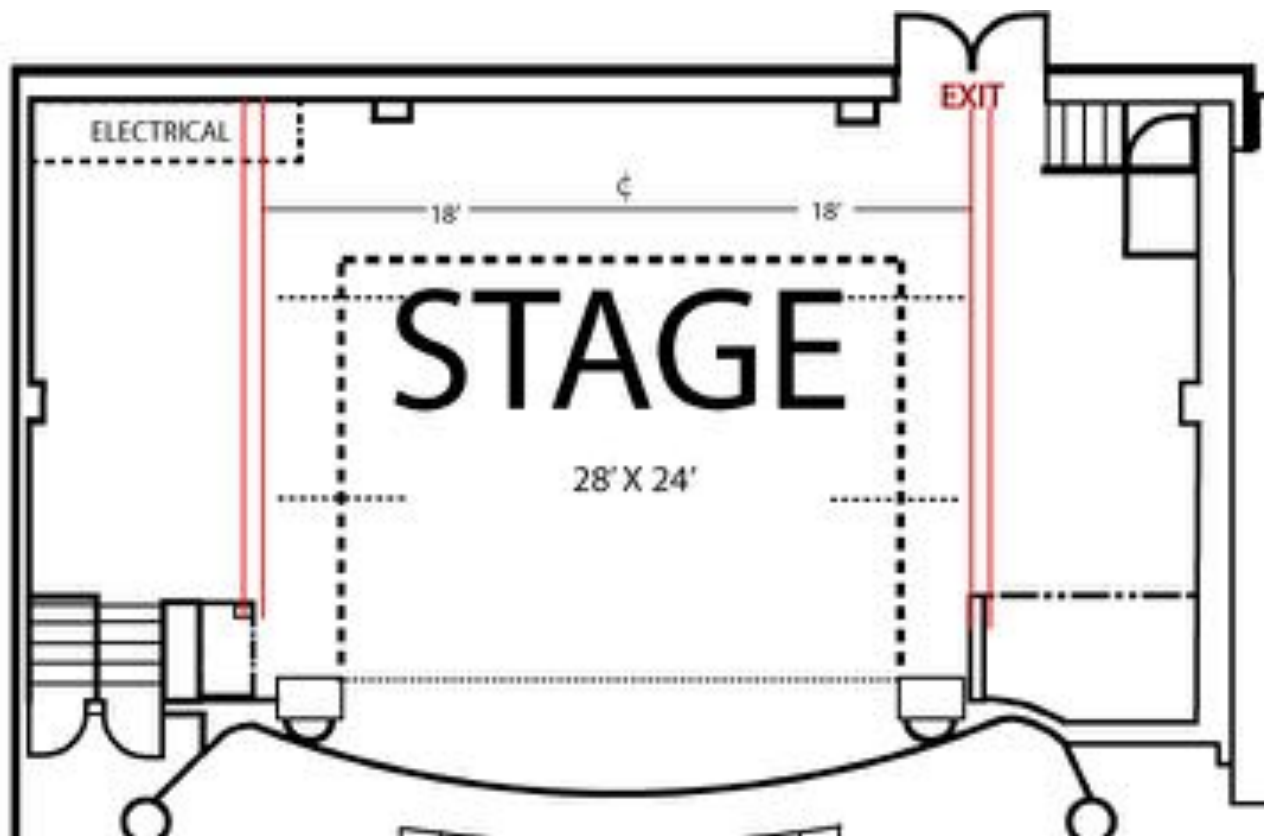
Maximum weight allowed is 2x tons per beam, with 6' minimum spacing between points.

The beams are 30' from stage, and are rigged using a single person lift.

Trim height for rigged truss is approx 17' from stage.

The theatre's historic layout prohibits a downstage truss from being rigged from these beams.

The theatre's curtains and curtain legs limit the placement of rigging points.



# VENUE MAP

